



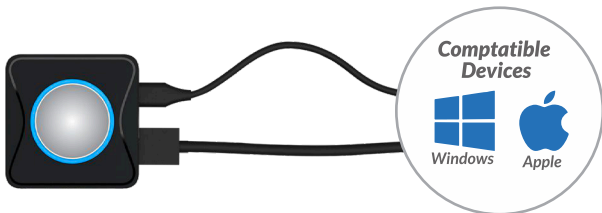
Simple Wireless Mirroring

PushShare enables smooth collaboration during meetings by allowing participants to wirelessly mirror their devices to the Interactive Touch Display for more productive meetings. Once the dongle is connected to your device of choice, a simple push of the button will start wirelessly sharing the device's display to your Interactive Touch Display instantly. This simple system suits user behaviour so anyone can use it without the need for any installation or training – maximising the return on your investment.



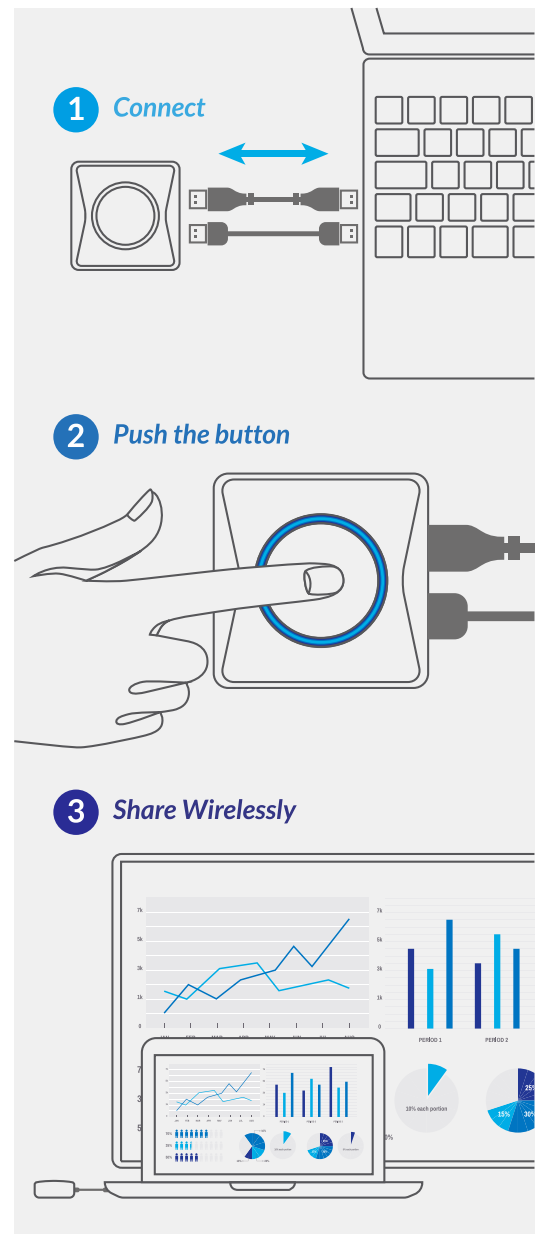
Universal Compatibility

Bring Your Own Device! PushShare enables users connect wirelessly to their Interactive Touch Display in seconds using any device that can output a HDMI signal, such as Windows or Mac laptop or PC. This truly is a fully agnostic solution.



Touch Screen Interactivity Supported

Once you have connected the PushShare dongle to your device you can use the Interactive Touch Display to control your device, providing two way interactivity. This is ideal when using PushShare to interact with a presentation on your laptop.



Other Features

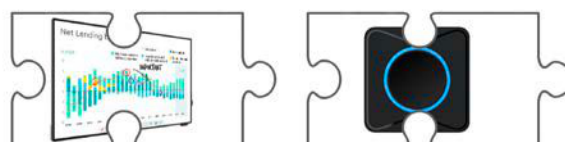
High Security Protection

The connection between the PushShare dongle and your Interactive Touch Display is fully password protected. PushShare is able to be seamlessly integrated into any IT network as it uses the hotspot network created by the Interactive Touch Display. Users can be sure that their mirroring is protected and secure between the devices.



Seamless Integration

The PushShare dongle and Interactive Touch Displays have been designed in conjunction with one another for ultimate collaboration. The receiver hardware and software that the dongle communicates with is already integrated into your Interactive Touch Display.



Multi-Screen Mirroring

With multiple PushShare dongles up to four separate devices can connect to the same Interactive Touch Displays simultaneously. This is ideal for collaborative meetings that also require interactivity.



Cost Effective Solution

As a budget friendly meeting room solution, PushShare is essential for businesses. With only a dongle needed to improve collaboration and efficiency during meetings and presentations, the cost effectiveness cannot be compared.



		PushShare Dongle
Connections	Ports	1 x HDMI (audio video signal transfer), 1 x USB type C (power, touch, pairing and upgrades)
Support	Sending Devices Supported	Any device with HDMI output
	Receiving Devices Supported	PushShare Receiving Unit (PSRV1) not included sold separately
	Reverse Touch Control	10-point touch via Windows 7, 8.1 and 10, 1-point touch via macOS
Audio Visual	Resolution	1920x1080 (P60)
	Encoding Resolution	1920x1080 (P30)
	Simultaneous Connections	1-4 (Seperate Dongles)
	Resolution - 4 Displays	3840x2160
	Audio	44.1KHz/48KHz/16bit PCM (Stereo)
Wireless Transmission	Protocol	IEEE 802.11ac/802.11n
	Rate	867Mbps
	Distance	≈30m
	Frequency Band	2.4 GHZ and 5 GHz
	Authentication Protocol	WPA2-PSK
	Average Transmission Delay	<150ms
Power	Power Consumption	5V/500mA, average power consumption 1.5W
Mechanical	Unit Size (WxHxD mm)	64x63x20
	Net Weight (g)	70
	Package Size (WxHxD mm)	215x92x25
	Gross Weight (g)	215
Environmental	Operating Temperature	+5°C ~ +40°C
	Storage Temperature	-20°C ~ +60°C
	Operating Humidity	0 ~ 90%
	Storage Humidity	0 ~ 90%
Accessories	Included	HDMI cable x 1 (100mm), USB type C to type A cable x 1 (170mm), HDMI adapter (standard to mini HDMI), HDMI adapter (standard to micro HDMI)
Warranty	Warranty Period	3 Years
	Technical Support	Lifetime